

Government of India
Ministry of Earth Sciences
India Meteorological Department



Press Release

Date: 03rd November, 2024

Time of Issue: 1300 hours IST

Subject: No significant weather over most parts of the country during next 3-4 days.

i) Rainfall Forecast and warning over the country

Realised rainfall during past 24 hours till 0830 hours IST of today (Annexure I)

Heavy to very Heavy rainfall at isolated places over Tamil Nadu, Puducherry & Karaikal and Kerala & Mahe.

Weather Systems:

- ❖ A **cyclonic circulation** lies over southeast Arabian Sea off south Kerala coast in lower tropospheric levels.

Forecast & Warnings (upto 7 days) (Annexure II & III):

- ✓ Light to moderate rainfall at a few places accompanied with isolated thunderstorm and lightning very likely over Tamil Nadu, Puducherry & Karaikal, Kerala & Mahe, South Interior Karnataka on 03rd & 04th November, Telangana on 03rd November, Assam & Meghalaya & Nagaland, Manipur, Mizoram & Tripura on 05th & 06th November, Kerala & Mahe on 05th November and Tamil Nadu, Puducherry & Karaikal, Coastal Andhra Pradesh & Yanam, Rayalaseema on 07th November.
- ✓ **Isolated heavy rainfall** very likely over Tamil Nadu, Puducherry & Karaikal and Kerala & Mahe on 03rd November and over Andaman & Nicobar Islands on 05th & 06th November.
- ✓ **Moderate to dense fog conditions** very likely in isolated pockets of northeast Uttar Pradesh on 03rd & 04th November during morning hours.

ii. Temperature conditions and Forecast

Temperature Conditions during past 24 hours till 0830 hours IST of today

There is a fall in both Maximum & Minimum Temperatures over Indo Gangetic plains by about 1-2°C during past 24 hours and no significant change over remaining parts of Northwest, Central and East India. Maximum Temperatures are above normal by 2-4°C over plains of Northwest, Central and East India. Minimum Temperature are above normal by 1-2°C over Haryana, Delhi, Odisha; by about 2-4°C over Rajasthan, Madhya Pradesh, Chhattisgarh, Uttar Pradesh, Vidarbha, Gangetic West Bengal and by 2-6°C over Bihar.

Forecast of temperature

- ✓ No significant change in Maximum & Minimum temperatures over North & Central India during next 3-4 days.

iii. Weather forecast over Delhi/NCR during 03rd November to 06th November 2024

Past Weather:

There has been slight fall in minimum temperature over Delhi/NCR during past 24hr. The Maximum and Minimum temperature over Delhi are in the range of 32-34°C and 13-18°C respectively. The maximum temperature was above normal by 2 – 3°C and minimum temperature was above normal by 1 -3°C over some places in the region. Mainly clear sky condition with predominant surface wind from variable directions with wind speed reaching 04 – 08 kmph prevailed during daytime and calm winds during night. Currently smog condition with calm wind prevailing over the region.

Weather Forecast:

03.11.2024: Mainly clear sky. The predominant surface wind is likely to be from variable directions with wind speed upto 04 - 08 kmph till evening. It would decrease thereafter becoming less than 06 kmph from variable directions during night. Smog /mist is likely in the night.

04.11.2024: Mainly clear sky. The predominant surface wind is likely to be from variable directions with wind speed upto 05 kmph during morning hours. Smog/ shallow fog/ mist in the morning. The wind speed will gradually increase becoming upto 08 kmph from variable directions during afternoon. It will decrease thereafter becoming less than 05 kmph from variable directions during evening and night. Smog/ mist is likely in the night.

05.11.2024: Mainly clear sky. The predominant surface wind is likely to be from Southeast directions with wind speed less than 08 kmph during morning hours. Smog/mist in the morning. The wind speed will gradually increase becoming 06- 12 kmph from Southeast directions during afternoon. It will decrease thereafter becoming less than 05 kmph from East directions during evening and night. Smog/ mist is likely in the night.

06.11.2024: Mainly clear sky. The predominant surface wind is likely to be from Southeast direction with wind speed upto 04 - 08 kmph during morning hours. Smog/shallow fog/mist in the morning. The wind speed will increase thereafter becoming 10 - 15 kmph from South directions during afternoon. It will gradually decrease becoming 04 – 08 kmph from variable directions during evening and night. Smog/ mist is likely in the night.

For more details, kindly refer National Weather Bulletin:

https://mausam.imd.gov.in/responsive/all_india_forecast_bulletin.php

For District wise warnings refer: <https://mausam.imd.gov.in/responsive/districtWiseWarningGIS.php>

For Fishermen warnings, kindly refer:

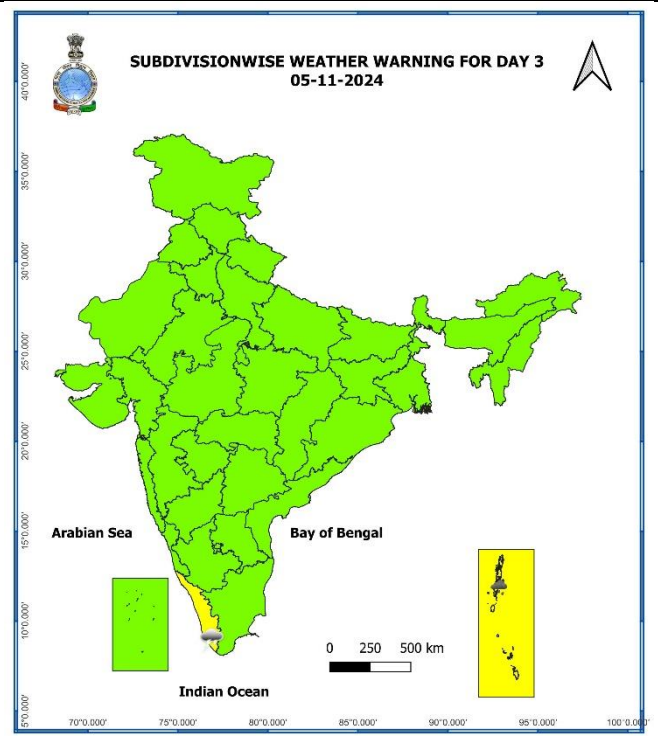
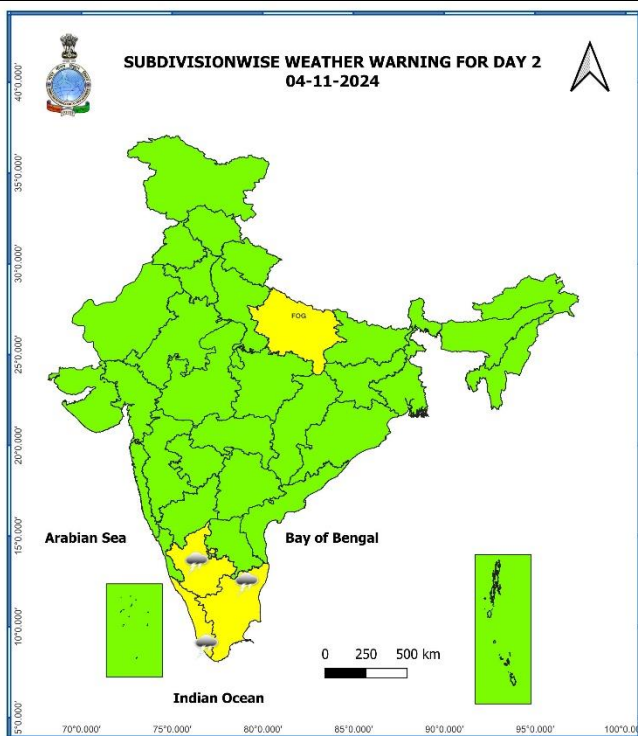
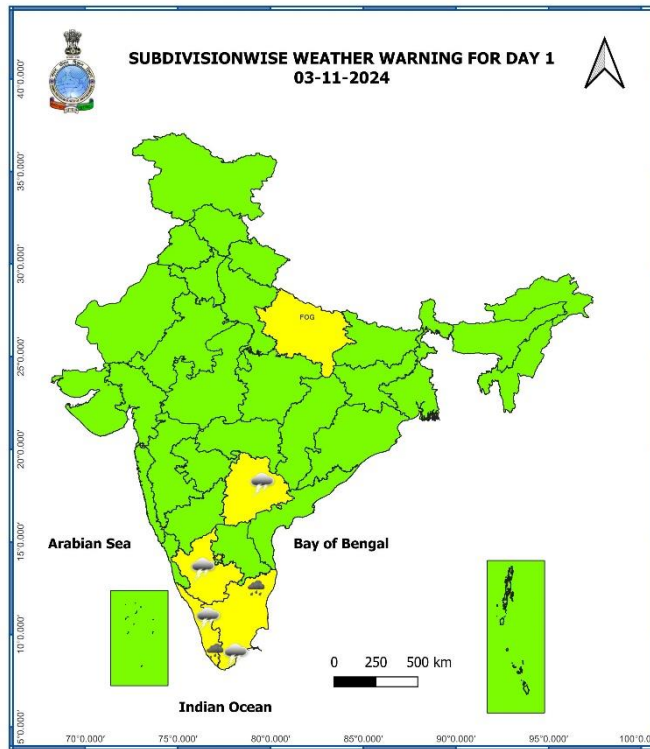
https://rsmcnewdelhi.imd.gov.in/uploads/archive/51/51_bdf575_GRAPHIC.png

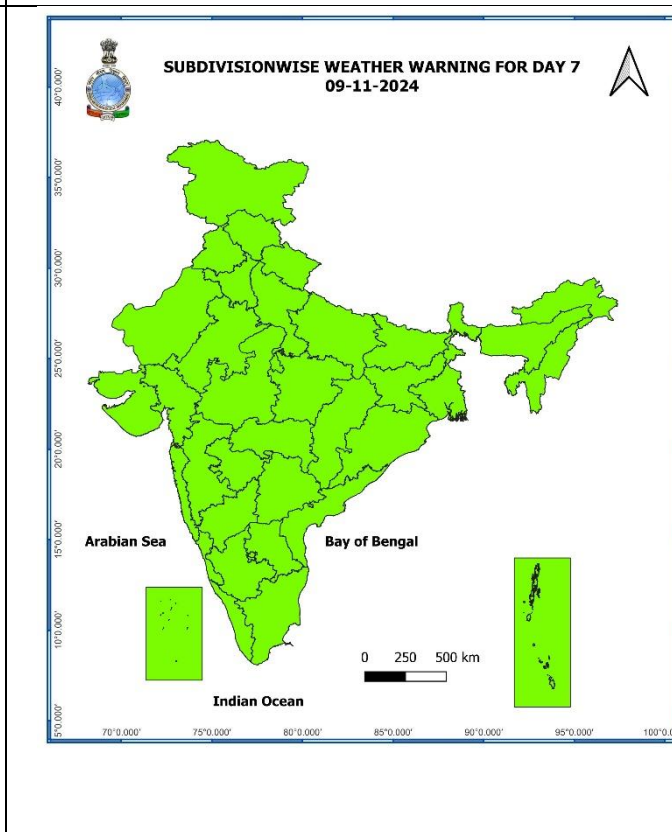
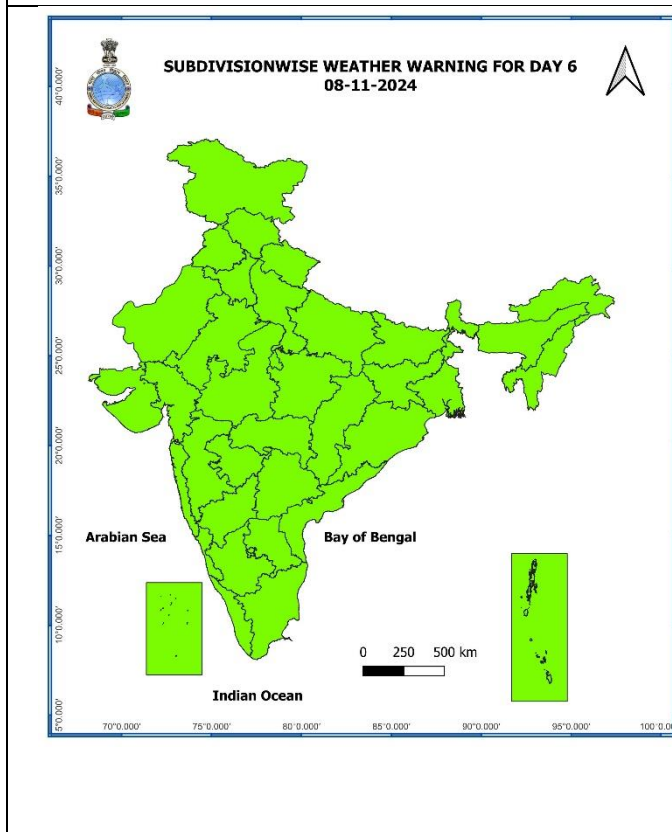
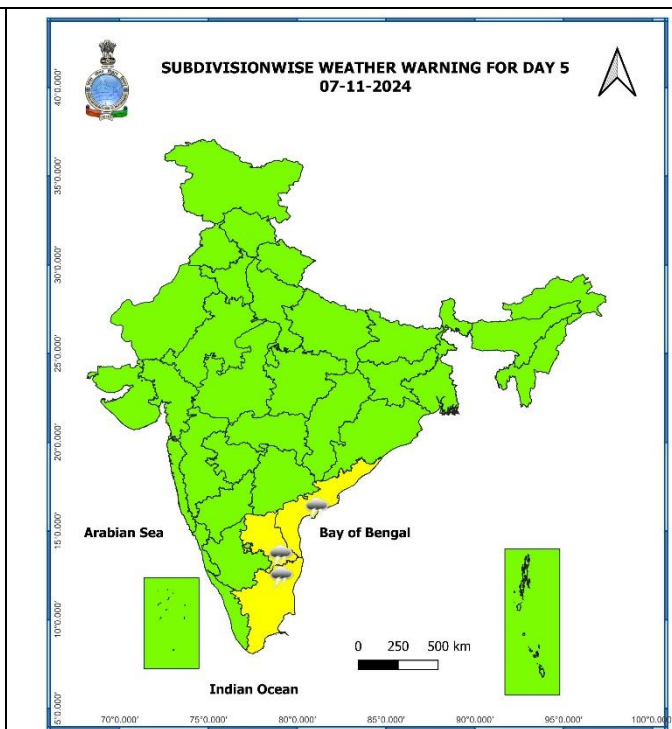
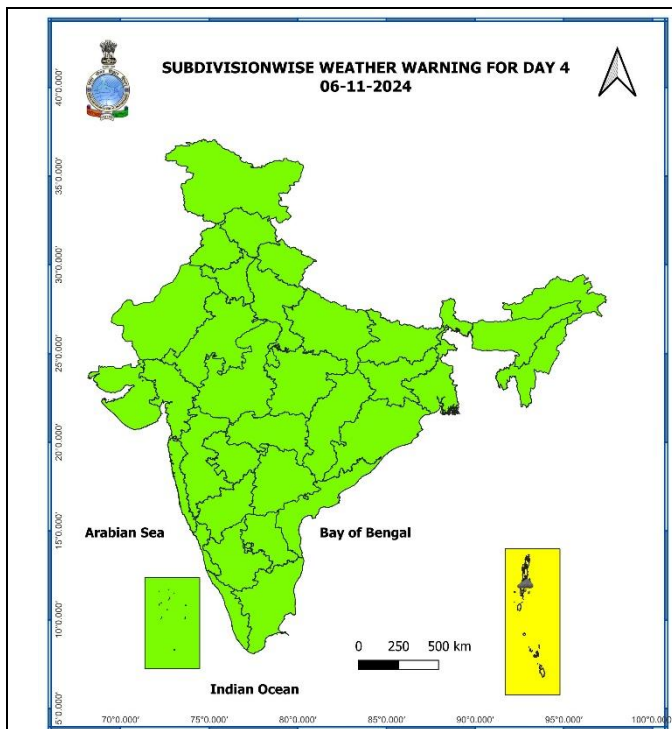
**Significant Rainfall recorded during past 24 hours till 0830 hours IST of today
03.11.2024 (in cm):**

- ❖ **Tamil Nadu:** Kottaram (dist Kanyakumari) 16, Kil Kotagiri Estate (dist The Nilgiris), Coonoor PTO (dist The Nilgiris), Kothagiri (dist The Nilgiris), Alakarai Estate (dist The Nilgiris) 14 each, Kanniyakumari (dist Kanyakumari), Adar Estate (dist The Nilgiris) 13 each, Sothuparai (dist Theni), Burliar (dist The Nilgiris), Billimalai Estate (dist The Nilgiris) 12 each, Mylaudy (dist Kanyakumari), Coonoor (dist The Nilgiris) 11 each, Perunchani Dam (dist Kanyakumari), Suralacode (dist Kanyakumari), Puthan Dam (dist Kanyakumari), Thuckalay (dist Kanyakumari) 10 each, Kurunthancode (dist Kanyakumari) 9, Balamore (dist Kanyakumari) 8, Periyar (dist Theni), Vadipatti (dist Madurai), Pillur Dam Mettupalayam (dist Coimbatore), R.S.Mangalam (dist Ramanathapuram), Kodanad (dist The Nilgiris), Navalur Kottapattu (dist Thiruchirappalli), Vathalai Anaicut (dist Thiruchirappalli), Adayamadai (dist Kanyakumari) 7 each.
- ❖ **Kerala:** Laha (dist Pathanamthitta) 12, Chalakudi (dist Thrissur) 10, Kalamassery (dist Ernakulam) 10, Anayirankal Dam (dist Idukki) 8, Chimoni (dist Thrissur) 8, Neyyattinkara (dist Thiruvananthapuram) 7.

7 Days Rainfall Forecast								
S. No.	Subdivision	03-Nov	04-Nov	05-Nov	06-Nov	07-Nov	08-Nov	09-Nov
		Day 1	Day 2	Day 3	Day 4	Day 5	Day 6	Day 7
1	ANDAMAN & NICOBAR ISLANDS	FWS	FWS	WS	WS	WS	FWS	FWS
2	ARUNACHAL PRADESH	ISOL	ISOL	ISOL	ISOL	ISOL	DRY	DRY
3	ASSAM & MEGHALAYA	ISOL	ISOL	SCT	SCT	ISOL	ISOL	ISOL
4	NAGALAND, MANIPUR, MIZORAM & TRIPURA	ISOL	ISOL	SCT	SCT	ISOL	DRY	DRY
5	SUB-HIMALAYAN WEST BENGAL & SIKKIM	ISOL	ISOL	ISOL	ISOL	DRY	DRY	DRY
6	GANGETIC WEST BENGAL	DRY	DRY	ISOL	ISOL	DRY	DRY	DRY
7	ODISHA	DRY	DRY	ISOL	DRY	ISOL	ISOL	ISOL
8	JHARKHAND	DRY	DRY	DRY	DRY	DRY	DRY	DRY
9	BIHAR	DRY	ISOL	ISOL	DRY	DRY	DRY	DRY
10	EAST UTTAR PRADESH	DRY	ISOL	DRY	DRY	DRY	DRY	DRY
11	WEST UTTAR PRADESH	DRY	DRY	DRY	DRY	DRY	DRY	DRY
12	UTTARAKHAND	ISOL	ISOL	DRY	DRY	DRY	DRY	DRY
13	HARYANA CHANDIGARH & DELHI	DRY	DRY	DRY	DRY	DRY	DRY	DRY
14	PUNJAB	DRY	DRY	DRY	DRY	DRY	DRY	DRY
15	HIMACHAL PRADESH	DRY	DRY	DRY	DRY	DRY	DRY	DRY
16	JAMMU & KASHMIR AND LADAKH	DRY	DRY	DRY	DRY	DRY	DRY	DRY
17	WEST RAJASTHAN	DRY	DRY	DRY	DRY	DRY	DRY	DRY
18	EAST RAJASTHAN	DRY	DRY	DRY	DRY	DRY	DRY	DRY
19	WEST MADHYA PRADESH	DRY	DRY	DRY	DRY	DRY	DRY	DRY
20	EAST MADHYA PRADESH	DRY	DRY	DRY	DRY	DRY	DRY	DRY
21	GUJARAT REGION	DRY	DRY	DRY	DRY	DRY	DRY	DRY
22	SAURASHTRA & KUTCH	DRY	DRY	DRY	DRY	DRY	DRY	DRY
23	KONKAN & GOA	ISOL	ISOL	DRY	DRY	DRY	DRY	DRY
24	MADHYA MAHARASHTRA	ISOL	DRY	DRY	DRY	DRY	DRY	DRY
25	MARATHAWADA	DRY	DRY	DRY	DRY	DRY	DRY	DRY
26	VIDARBHA	DRY	DRY	DRY	DRY	DRY	DRY	DRY
27	CHHATTISGARH	DRY	DRY	DRY	DRY	DRY	DRY	DRY
28	COASTAL ANDHRA PRADESH & YANAM	ISOL	ISOL	ISOL	ISOL	ISOL	ISOL	ISOL
29	TELANGANA	ISOL	ISOL	DRY	DRY	DRY	DRY	DRY
30	RAYALASEEMA	ISOL	ISOL	ISOL	ISOL	ISOL	ISOL	SCT
31	TAMILNADU PUDUCHERRY & KARAIKAL	SCT	SCT	ISOL	ISOL	ISOL	SCT	SCT
32	COASTAL KARNATAKA	ISOL	ISOL	ISOL	DRY	DRY	ISOL	ISOL
33	NORTH INTERIOR KARNATAKA	ISOL	ISOL	DRY	DRY	DRY	DRY	DRY
34	SOUTH INTERIOR KARNATAKA	ISOL	ISOL	DRY	DRY	ISOL	ISOL	ISOL
35	KERALA & MAHE	FWS	FWS	SCT	SCT	SCT	FWS	FWS
36	LAKSHADWEEP	FWS	FWS	SCT	SCT	SCT	SCT	SCT

- As the lead period increases forecast accuracy decreases.





- Action may be taken based on ORANGE AND RED COLOUR warnings.
- Vulnerable regions likely urban and hilly areas action may be initiated for heavy rainfall warning.
- As the lead period increases forecast accuracy decreases.

Agromet advisories for Heavy Rainfall likely over Tamil Nadu, Kerala and South Interior Karnataka of the country

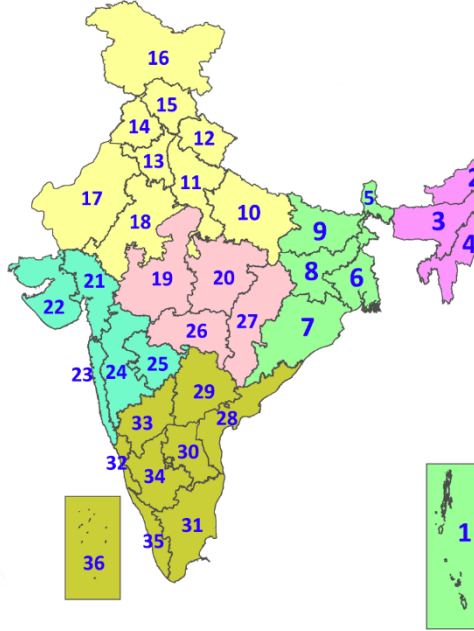
- In **Tamil Nadu**, drain out excess water from paddy and other field crops, vegetables and orchards. Undertake propping in sugarcane and provide support to banana plantations to avoid lodging.
- Drain out excess water from the standing crops in **Kerala**. Provide support to banana plants and strengthen the vegetable pandals.
- Keep the harvested produce at safer places.
- Provide mechanical support to horticultural crops and staking to vegetables.

Legends & abbreviations:

- ❖ **Heavy Rain:**64.5-115.5mm; **Very Heavy Rain:**115.6-204.4mm; **Extremely Heavy Rain:** >204.4mm.
- ❖ **Obsy:** Observatory; **AWS:** Automatic Weather Station; **ARG:** Automatic Rain Gauge; **dist:** District; **NH:** National Highway; **KVK:** Krishi Vigyan Kendra; **DVC:** Damodar Valley Corporation; **PTO:** Part Time Office, **Aero:** Aerodrome, **IAF:** Indian Air Force.
- ❖ **Region wise classification of meteorological Sub-Divisions:**
 - **Northwest India:** Western Himalayan Region (Jammu-Kashmir-Ladakh-Gilgit-Baltistan-Muzaffarabad, Himachal Pradesh and Uttarakhand); Punjab, Haryana-Chandigarh-Delhi; West Uttar Pradesh, East Uttar Pradesh, West Rajasthan and East Rajasthan.
 - **Central India:** West Madhya Pradesh, East Madhya Pradesh, Vidarbha and Chhattisgarh.
 - **East India:** Bihar, Jharkhand, Sub-Himalayan West Bengal & Sikkim; Gangetic West Bengal, Odisha and Andaman & Nicobar Islands.
 - **Northeast India:** Arunachal Pradesh, Assam & Meghalaya and Nagaland, Manipur, Mizoram & Tripura.
 - **West India:** Gujarat Region, Saurashtra & Kutch, Konkan & Goa, Madhya Maharashtra and Marathawada.
 - **South India:** Coastal Andhra Pradesh & Yanam, Telangana, Rayalaseema, Coastal Karnataka, North Interior Karnataka, South Interior Karnataka, Kerala & Mahe, Tamil Nadu, Puducherry & Karaikal and Lakshadweep.

LEGENDS

1. अंडमान और निकोबार द्वीपसमूह
2. अरुणाचल प्रदेश
3. असम और मेघालय
4. नागालैंड, मणिपुर, मिजोरम और त्रिपुरा
5. उप-हिमालयी पश्चिम बंगाल और सिक्किम
6. गंगीय पश्चिम बंगाल
7. ओडिशा
8. झारखंड
9. बिहार
10. पूर्वी उत्तर प्रदेश
11. पश्चिम उत्तर प्रदेश
12. उत्तराखंड
13. हरियाणा, चंडीगढ़ और दिल्ली
14. पंजाब
15. हिमाचल प्रदेश
16. जम्मू और कश्मीर और लद्दाख
17. पश्चिम राजस्थान
18. पूर्वी राजस्थान
19. पश्चिम मध्य प्रदेश
20. पूर्वी मध्य प्रदेश
21. गुजरात
22. सौराष्ट्र
23. कोंकण और गोवा
24. मध्य महाराष्ट्र
25. मराठवाड़ा
26. विदर्भ
27. छत्तीसगढ़
28. तटीय आंध्र प्रदेश और यनम
29. तेलंगाना
30. रायलसेमा
31. तमिलनाडु, पुडुचेरी और कराईकल
32. तटीय कर्नाटक
33. आंतरिक उत्तरी कर्नाटक
34. आंतरिक दक्षिणी कर्नाटक
35. केरल और माहे
36. लक्षद्वीप



1. Andaman & Nicobar Islands
2. Arunachal Pradesh
3. Assam & Meghalaya
4. Nagaland, Manipur, Mizoram & Tripura
5. Sub-Himalayan West Bengal & Sikkim
6. Gangetic West Bengal
7. Odisha
8. Jharkhand
9. Bihar
10. East Uttar Pradesh
11. West Uttar Pradesh
12. Uttarakhand
13. Haryana, Chandigarh & Delhi
14. Punjab
15. Himachal Pradesh
16. Jammu & Kashmir and Ladakh
17. West Rajasthan
18. East Rajasthan
19. West Madhya Pradesh
20. East Madhya Pradesh
21. Gujarat
22. Saurashtra
23. Konkan & Goa
24. Madhya Maharashtra
25. Marathwada
26. Vidarbha
27. Chhattisgarh
28. Coastal Andhra Pradesh & Yanam
29. Telangana
30. Rayalaseema
31. Tamilnadu, Puducherry & Karaikal
32. Coastal Karnataka
33. North Interior Karnataka
34. South Interior Karnataka
35. Kerala & Mahe
36. Lakshadweep

SPATIAL DISTRIBUTION (% of Stations reporting)

% Stations	Category	% Stations	Category
76-100	Widespread (WS/Most Places)	26-50	Scattered (SCT/A Few Places)
51-75	Fairly Widespread (FWS/Many Places)	1-25	Isolated (ISOL)

- | | | |
|----------------------|----------------------|--------------|
| Fog | Heavy Snow | Cold Wave |
| Heavy Rain | Dust Storm | Cold Day |
| Very Heavy Rain | Heat Wave | Ground Frost |
| Extremely Heavy Rain | Warm Night | |
| Thunder & Lightning | Hot Day | |
| Hailstorm | Hot & Humid | |
| Dust Raising Winds | Strong Surface Winds | |

COLOUR CODED WARNING

- No Warning (No Action)
- Watch (Be Aware)
- Alert (Be Prepared To Take Action)
- Warning (Take Action)

Probabilistic Forecast

Terms	Probability of Occurrence (%)
Unlikely	< 25
Likely	25 - 50
Very Likely	50 - 75
Most Likely	> 75

* Red colour warning does not mean "Red Alert", Red colour warning means "Take Action".
Forecast and Warning for any day is valid from 0830 hours IST of day till 0830 hours IST of next day.
For more details, kindly visit <https://mausam.imd.gov.in> or contact: 011-2434-4599
(Service to the Nation since 1875)

DEFINITION/CRITERIA

Rain/ Snow *	<p>Heavy: 64.5 to 115.5 mm/cm *</p> <p>Very Heavy: 115.6 to 204.4 mm/cm*</p> <p>Extremely Heavy: > 204.4 mm/cm *</p>
Heat Wave	<p>When maximum temperature of a station reaches $\geq 40^\circ\text{C}$ for plains and $\geq 30^\circ\text{C}$ for hilly regions</p> <p>(a) Based on Departure from normal</p> <p>Heat Wave: Maximum Temperature Departure from normal 4.5°C to 6.4°C.</p> <p>Severe Heat Wave: Maximum Temperature Departure from normal $\geq 6.5^\circ\text{C}$</p> <p>(b). Based on Actual maximum temperature</p> <p>Heat Wave: When actual maximum temperature $\geq 45^\circ\text{C}$.</p> <p>Severe Heat Wave: When actual maximum temperature $\geq 47^\circ\text{C}$</p> <p>(c). Criteria for heat wave for coastal stations</p> <p>When maximum temperature departure is $>4.5^\circ\text{C}$ from normal. Heat Wave may be described provided maximum temperature $\geq 37^\circ\text{C}$</p>
Warm Night	<p>When maximum temperature remains 40°C</p> <p>Warm Night: When minimum temperature departure 4.5°C to 6.4°C.</p> <p>Severe Warm Night: When minimum temperature departure $>6.4^\circ\text{C}$.</p>
Cold Wave	<p>When minimum temperature of a station $\leq 10^\circ\text{C}$ for plains and $\leq 0^\circ\text{C}$ for hilly regions.</p> <p>(a). Based on departure</p> <p>Cold Wave: Minimum Temperature Departure from normal -4.5°C to -6.4°C.</p> <p>Severe Cold Wave: Minimum Temperature Departure from normal $\leq -6.5^\circ\text{C}$</p> <p>(b) Based on actual Minimum Temperature (for Plains only)</p> <p>Cold Wave : When Minimum Temperature is $\leq 4.0^\circ\text{C}$</p> <p>Severe Cold Wave: When Minimum Temperature is $\leq 2.0^\circ\text{C}$</p> <p>(c) For Coastal Stations</p> <p>When Minimum Temperature departure is $\leq -4.5^\circ\text{C}$ & actual Minimum Temperature is $\leq 15^\circ\text{C}$</p>
Cold Day	<p>When minimum temperature of a station $\leq 10^\circ\text{C}$ for plains and $\leq 0^\circ\text{C}$ for hilly regions</p> <p>Based on departure</p> <p>Cold Day: Maximum Temperature Departure from normal -4.5°C to -6.4°C.</p> <p>Severe Cold Day: Maximum Temperature Departure from normal $\leq -6.5^\circ\text{C}$</p>
Fog	<p>Phenomenon of small droplets suspended in air and the horizontal visibility $< 1\text{km}$</p> <p>Moderate Fog: When the visibility between 500-200 metres</p> <p>Dense Fog: when the visibility between 50- 200 metres</p> <p>Very Dense Fog: when the visibility < 50 metres</p>
Thunderstorm	<p>Sudden electrical discharges manifested by a flash of light (Lightning) and a sharp rumbling sound (thunder)</p>
Dust/Sand Storm	<p>An ensemble of particles of dust or sand energetically lifted to great heights by a strong and turbulent wind.</p>
Frost	<p>Ice deposits on ground</p> <p>Air temperature $\leq 4^\circ\text{C}$ (over Plains)</p>
Squall	<p>A strong wind that rises suddenly, lasts for atleast 1 minute.</p> <p>Moderate: Wind speed 52-61 kmph</p> <p>Severe: Wind speed 62-87 kmph</p> <p>Very Severe: Wind speed >87 kmph</p>
Sea State	<p>Effect of various waves in the sea over specific area</p> <p>Rough to very rough: Wind speed 41-62 kmph (22-33 knots) & Wave height 2.5-6 metre</p> <p>High to very high: Wind speed 63-117 kmph (34-63 knots) & Wave height 6-14 metre</p> <p>Phenomenal: Wind speed >117 kmph (>63 knots) & Wave height >14 metre</p>
Cyclone	<p>Cyclonic Storm: Wind speed 62-87 kmph (34-47 knots)</p> <p>Severe Cyclonic Storm: Wind speed 88-117 kmph (48-63 knots)</p> <p>Very Severe Cyclonic Storm: Wind speed 118-165 kmph (64 - 89 knots)</p> <p>Extremely Severe Cyclonic Storm: Wind speed 166-220 kmph (90 -119 knots)</p> <p>Super Cyclone Strom: Wind speed >220 kmph (>119 knots)</p>

* Red colour warning does not mean "Red Alert", Red colour warning means "Take Action".
Forecast and Warning for any day is valid from 0830 hours IST of day till 0830 hours IST of next day.
For more details, kindly visit <https://mausam.imd.gov.in> or contact: 011-2434-4599
(Service to the Nation since 1875)